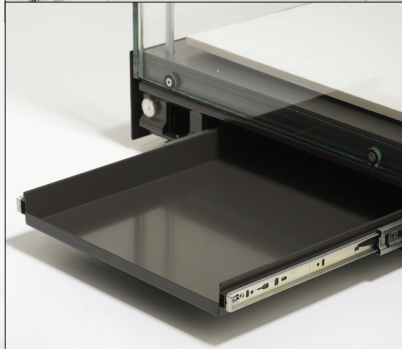


Z4 MODULAR ASSEMBLY DISPLAY CASES SYSTEM

Airtight. Climate control design
Multi-axis assembly
Standard size of 750 X 750 X 2100



Steel frame (powder coated)
Southco locks
Regular or low iron 10mm glass
available tempered or laminated
6mm glass top
Removable display desk.
Pivot opening, tempered steel
Pure silicone seals
Desiccant compartment under
display deck
Levelers

Options

Independent desiccant drawer
Multiple cases assembly Kit
Glass shelving system with stainless
steel rods
Light attic with choice of:

- Halogen projectors
- LED projectors
- Fluorescent tubes
- Fiber optic lighting system

